

91 Derbyshire Lane, Stretford, Trafford, M32 8BN



JP&Brimelow
ESTATE AGENTS



5 2 2

VIDEO TOUR AVAILABLE An attractive and extended, FIVE BEDROOM, semi-detached, bay fronted property. This period property is located in a prime location, off Chester Road in Stretford.

Situated within walking distance to Stretford mall and local amenities, fantastic primary schools and Victoria park with its open space and children's play area. Close by to Stretford Metrolink station on Edge Lane offering direct access into Manchester city centre and Altrincham.

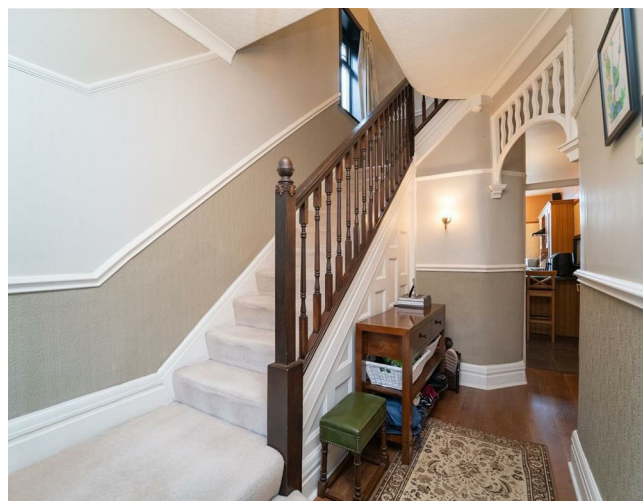
In brief this well-planned property consists of; an entrance hall, a good sized lounge to the front aspect complete with bay window and exposed brick feature wall, a dining area which leads through to a conservatory which has views and access out into the rear garden, there is a fitted kitchen which has access down into the useful chamber caller and out into the rear garden.

Stairs leading to the first floor landing reveal three double bedrooms, an additional bedroom and a white three piece family bathroom.

To the second floor you will find the large principal bedroom benefitting from a three-piece en-suite shower room. Completing this delightful home.


The property benefits from gas fired central heating, an alarm system, high ceilings throughout, ceiling coving and picture rails, and a rear enclosed garden.

£560,000





EPC Chart

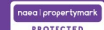
Energy Efficiency Rating		Current	Potential
Very energy efficient - lower running costs			
(92 plus)	A		
(81-91)	B		
(69-80)	C		
(55-68)	D		
(39-54)	E		
(21-38)	F		
(1-20)	G		
Not energy efficient - higher running costs			
England & Wales			EU Directive 2002/91/EC 



Tenure: Leasehold Council Tax Band: D



JP & Brimelow Estate Agents Ltd
 430 Barlow Moor Road, Manchester, M21 8AD
 Tel: 0161 8822233
 E: sales@jpbrimelow.co.uk www.jpandbrimelow.co.uk



JP & Brimelow
 ESTATE AGENTS

NOTICE: JP & Brimelow Estate Agents Ltd for themselves and for the vendors or lessors of this property whose agents they are give notice that:

- (i) the particulars are set out as a general outline only for the guidance of intending purchasers or lessees, and do not constitute, nor constitute part of, an offer or contract;
- (ii) all descriptions, dimensions, references to the condition and necessary permissions for use and occupation, and other details are given in good faith and are believed to be correct but any intending purchasers or tenants should not rely on them as statements or representations of fact but must satisfy themselves by inspection or otherwise as to the correctness of each of them;
- (iii) no person in the employment of JP & Brimelow Estate Agents Ltd has any authority to make or give any representation or warranty whatever in relation to this property.

jpandbrimelowstateagents

@jpandbrimelow

